



India Meteorological Department  
(Ministry of Earth Sciences)

NATIONAL BULLETIN NO.24 (BOB/01/2024)

TIME OF ISSUE: 1820 HOURS IST

DATED: 27.05.2024

FROM: INDIA METEOROLOGICAL DEPARTMENT (FAX NO. 24643965/24699216/24623220)

TO: CONTROL ROOM, NDM, MINISTRY OF HOME AFFAIRS (FAX.NO. 23093750)

CONTROL ROOM NDMA (FAX.NO. 26701729)

CABINET SECRETARIAT (FAX.NO.23012284, 23018638)

PS TO HON'BLE MINISTER FOR S & T AND EARTH SCIENCES (FAX NO.23316745)

SECRETARY, MOES (FAX NO. 24629777)

H.Q. (INTEGRATED DEFENCE STAFF AND CDS) (FAX NO. 23005137/23005147)

DIRECTOR GENERAL, DOORDARSHAN (23385843)

DIRECTOR GENERAL, AIR (23421105, 23421219)

PIB MOES (FAX NO. 23389042)

UNI (FAX NO. 23355841)

D.G. NATIONAL DISASTER RESPONSE FORCE (NDRF) (FAX NO. 26105912, 2436 3260)

DIRECTOR, PUNCTUALITY, INDIAN RAILWAYS (FAX NO. 23388503)

CHIEF SECRETARY, ANDAMAN & NICOBAR ISLANDS (FAX NO. 03192- 232656)

CHIEF SECRETARY, GOVT. WEST BENGAL (FAX NO. 033-22144328)

CHIEF SECRETARY, GOVT. OF ODISHA (FAX NO. 0674 -2536660)

CHIEF SECRETARY, GOVT. OF ANDHRA PRADESH (FAX NO. 0863-2441029, 08645-246600)

CHIEF SECRETARY, GOVT. OF TAMIL NADU (FAX NO. 044-25672304)

CHIEF SECRETARY, GOVT. OF PUDUCHERRY (FAX NO. 0413-2337575, 2334145)

CHIEF SECRETARY, GOVT. OF TRIPURA (FAX NO. 0381-2414013, 2413200)

CHIEF SECRETARY, GOVT. OF MIZORAM (FAX NO. 0389-2322745, 2320588)

CHIEF SECRETARY, GOVT. OF MANIPUR (FAX NO. 0385-2452629)

CHIEF SECRETARY, GOVT. OF NAGALAND (FAX NO. 0370-2270057)

CHIEF SECRETARY, GOVT. OF ASSAM (FAX NO. 0361-2260900)

CHIEF SECRETARY, GOVT. OF MEGHALAYA (FAX NO. 0364-2225978)

**Sub: Cyclonic Storm “Remal” (pronounced as “Re-Mal”) over Bangladesh and adjoining West Bengal**

The Cyclonic Storm “Remal” (pronounced as “Re-Mal”) over Bangladesh and adjoining West Bengal moved slowly northwards, with a speed of 05 kmph during past 06 hours and lay centered at 1430 hrs IST of today, the 27<sup>th</sup> May, 2024 over the same region, near **latitude 23.1°N** and **longitude 89.2°E** about 80 km north-northwest of Mongla (Bangladesh), 110 km north-northeast of Canning (West Bengal), 120 km east-northeast of Kolkata (West Bengal), 170 km northwest of Khepupara (Bangladesh) and 140 km southwest of Dhaka (Bangladesh)

The system is likely to move north-northeastwards, and gradually weaken further into a Deep Depression by night of today, the 27<sup>th</sup> May 2024.

Forecast track and intensity are given in the following table:

Date/Time (IST)	Position (Lat. °N/ long. °E)	Maximum sustained surface wind speed (Kmph)	Category of cyclonic disturbance
27.05.24/1430	23.1/89.2	60-70 gusting to 80	Cyclonic Storm
27.05.24/1730	23.4/89.3	60-70 gusting to 80	Cyclonic Storm
27.05.24/2330	24.2/90.0	50-60 gusting to 70	Deep Depression
28.05.24/0530	24.8/90.7	35-45 gusting to 55	Depression
28.05.24/1130	25.4/91.5	25-35 gusting to 45	Well Marked Low Pressure Area

**Warnings (Graphics Attached):**

**Heavy Rainfall Warning:**

- (a) **West Bengal:** Light to moderate rainfall at most places with **heavy to very heavy rainfall** at isolated places is likely over coastal and eastern districts of Gangetic West Bengal adjacent to Bangladesh on 27<sup>th</sup> May.

Light to moderate rainfall at most places with **heavy to very heavy rainfall** at isolated places likely over eastern districts of Sub-Himalayan West Bengal on 27<sup>th</sup> and 28<sup>th</sup> May.

- (b) **Northeastern States:** Light to moderate rainfall at most places with **heavy to very heavy rainfall** at a few places is likely over Assam, Meghalaya, Arunachal Pradesh, Nagaland, Mizoram, Manipur & Tripura on 27<sup>th</sup> & 28<sup>th</sup> May. Isolated **extremely heavy rainfall** ( $\geq 20$  cm) is also likely over Assam, Meghalaya, Mizoram & Tripura on 27<sup>th</sup>, and Arunachal Pradesh on 28<sup>th</sup> May.

#### **Wind Warning:**

##### **(a) Bay of Bengal**

- ❖ **Gale wind speed reaching 60-70 kmph gusting to 80 kmph** is prevailing over North Bay of Bengal. It is likely to decrease becoming squally wind speed reaching 50-60 kmph gusting to 70 kmph by night of 27<sup>th</sup> May.

##### **(b) Along & off Bangladesh and West Bengal coasts**

- ❖ **Gale wind speed reaching 60-70 kmph gusting to 80 kmph** will continue to prevail along & off Bangladesh and adjoining West Bengal coasts during next 3 hours. It is likely to decrease becoming squally wind reaching 45-55 kmph gusting to 65 kmph by night of 27<sup>th</sup> May and decrease gradually thereafter.
- ❖ **Gale wind speed reaching 60-70 kmph gusting to 80 kmph** will continue to prevail over Kolkata & Nadia during next 3 hours. The wind speed would decrease over these regions gradually thereafter.

##### **(c) Northeastern States**

**Squally wind speed reaching 50-60 kmph gusting to 70 kmph** is likely over South Assam and Meghalaya, Tripura and **40-50 kmph gusting to 60 kmph** is likely over & Mizoram, Manipur and remaining parts of Assam on 27<sup>th</sup> May. It would reduce to 40-50 gusting to 60 kmph over Assam & Meghalaya till noon of 28<sup>th</sup> May.

#### **Sea condition warning:**

##### **(a) North Bay of Bengal**

High Sea condition is likely over North Bay of Bengal till night and gradually improve becoming very rough to rough thereafter till night of 27<sup>th</sup> May. It would improve thereafter.

##### **(b) Along & off Bangladesh and West Bengal coasts**

High sea condition is likely along & off Bangladesh and West Bengal coasts till evening and gradually improve becoming very rough to rough thereafter till 27<sup>th</sup> May night. It would improve thereafter.

#### **Damage Expected over West Bengal (South & North 24 Parganas, Kolkata, Nadia, Murshidabad districts) and Northeastern States (Assam, Meghalaya, Manipur, Tripura, Mizoram)**

- Damage to vulnerable structures and thatched houses/ huts.
- Unattached metal sheets may fly.
- Breaking of tree branches, uprooting of small trees. Damage to banana and papaya trees.
- Partial damage to power and communication lines due to breaking of branches and uprooting of small trees.
- Damage to Kutcha and minor damage to Pucca roads due to heavy rain.
- Damage to paddy crops, horticultural crops and orchards.
- Inundation of low-lying areas and localized flooding
- Occasional reduction in visibility due to heavy rainfall.
- Disruption of traffic due to water logging and squally winds

#### **Action Suggested for Damage Expected over West Bengal (South & North 24 Parganas, Kolkata, Nadia, Murshidabad districts) and Northeastern States (Assam, Meghalaya, Manipur, Tripura, Mizoram) on 27<sup>th</sup> May:**

- People in vulnerable areas to move to safer places.
- People in affected areas to remain indoors.
- Total suspension of fishing operations on 27<sup>th</sup> May.

- Surface transport and shipping Onshore & Offshore operations over North Bay of Bengal need to be regulated till afternoon of 27<sup>th</sup> May
- Avoid going to areas that face the water logging problems often.

**Fishermen Warning (graphics attached):**

Fishermen are advised not to venture into North Bay of Bengal along and off West Bengal and Bangladesh coasts till 27<sup>th</sup> May evening.

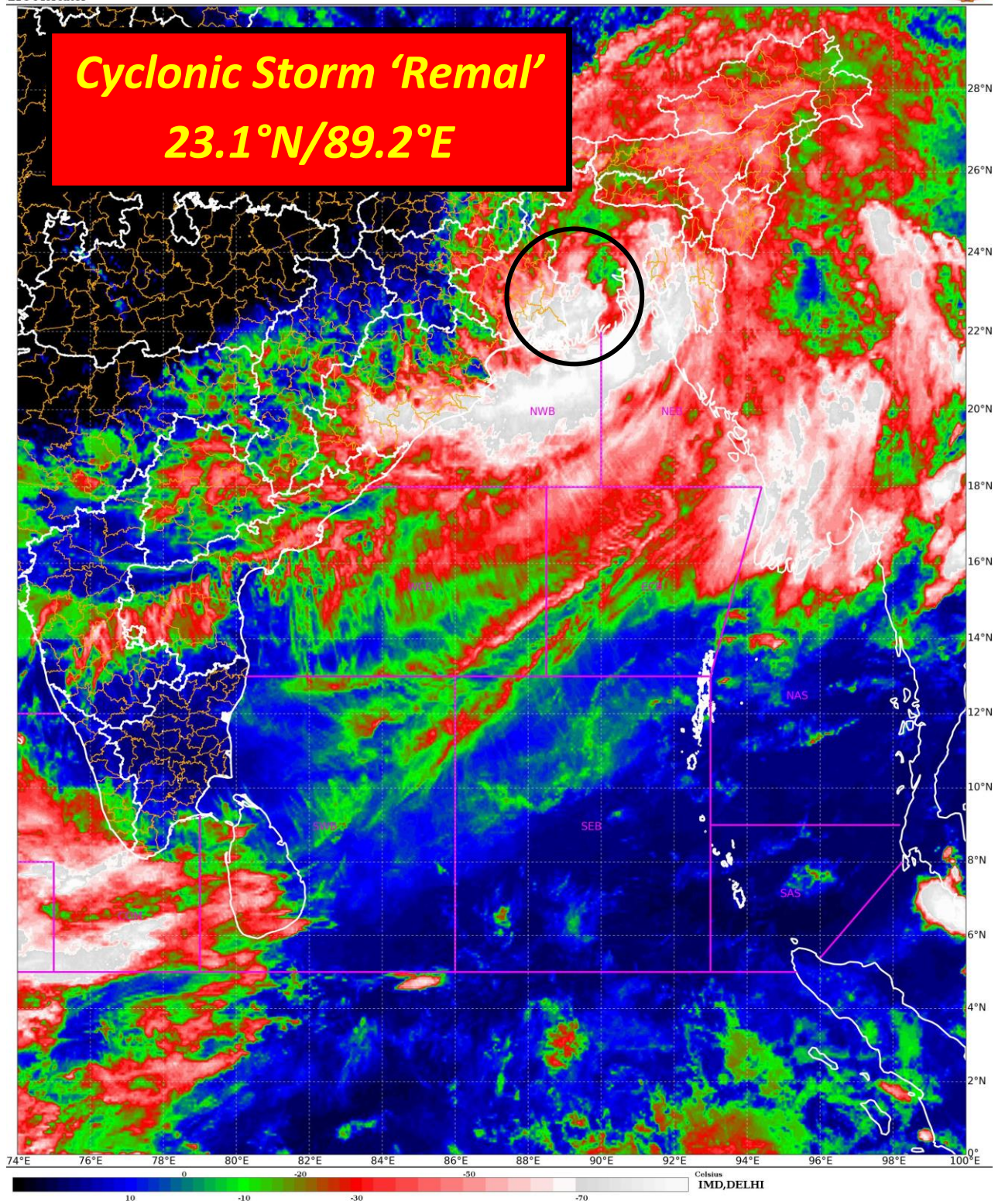
**The system is under continuous surveillance and the next message will be issued at 2030 hours IST of today, the 27<sup>th</sup> May, 2024.**

**(D. R. Pattanaik)**

**Scientist F, Cyclone Warning Division, New Delhi**

*Copy to: ACWC Kolkata/ ACWC Chennai/ CWC Bhubaneswar/CWC Visakhapatnam/MO  
Port Blair/RMC Guwahati*

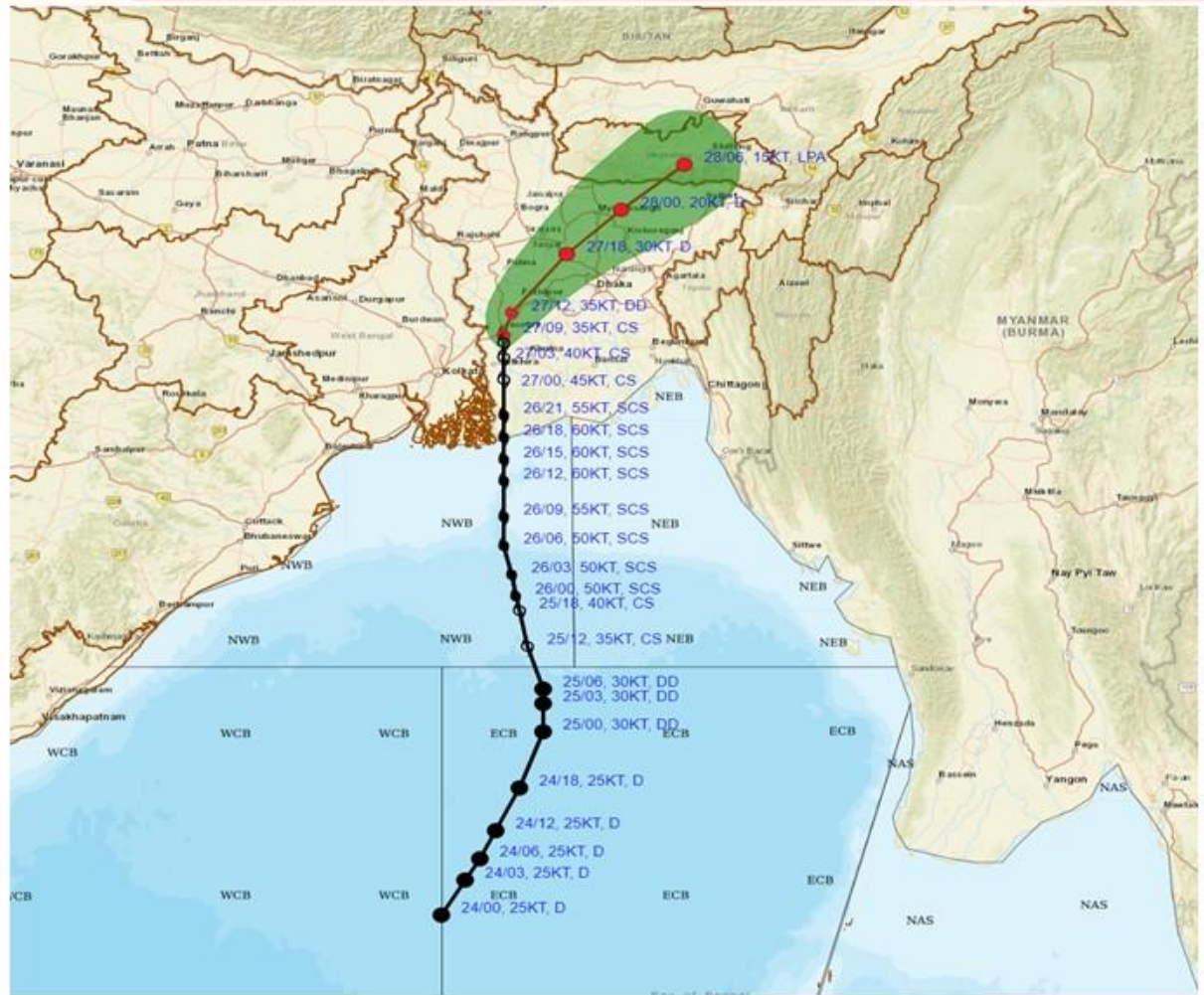








**FORECAST TRACK ALONGWITH CONE OF UNCERTAINTY IN ASSOCIATION WITH CYCLONIC STORM 'REMAL' OVER BANGLADESH AND ADJOINING WEST BENGAL BASED ON 0900 UTC (1430 IST) OF 27<sup>TH</sup> MAY 2024.**



DATE/TIME IN UTC  
IST=UTC + 0530

L: LOW PRESSURE AREA  
WML: WELL MARKED LOW PRESSURE AREA  
D: DEPRESSION (17-27 KT)  
DD: DEEP DEPRESSION (28-33 KT)  
CS: CYCLONIC STORM (34-47 KT)  
SCS: SEVERE CYCLONIC STORM (48-63KT)  
VSCS: VERY SEVERE CYCLONIC STORM (64-89 KT)  
ESCS: EXTREMELY SEVERE CYCLONIC STORM (90-119 KT)  
SuCS: SUPER CYCLONIC STORM (≥ 120 KT)

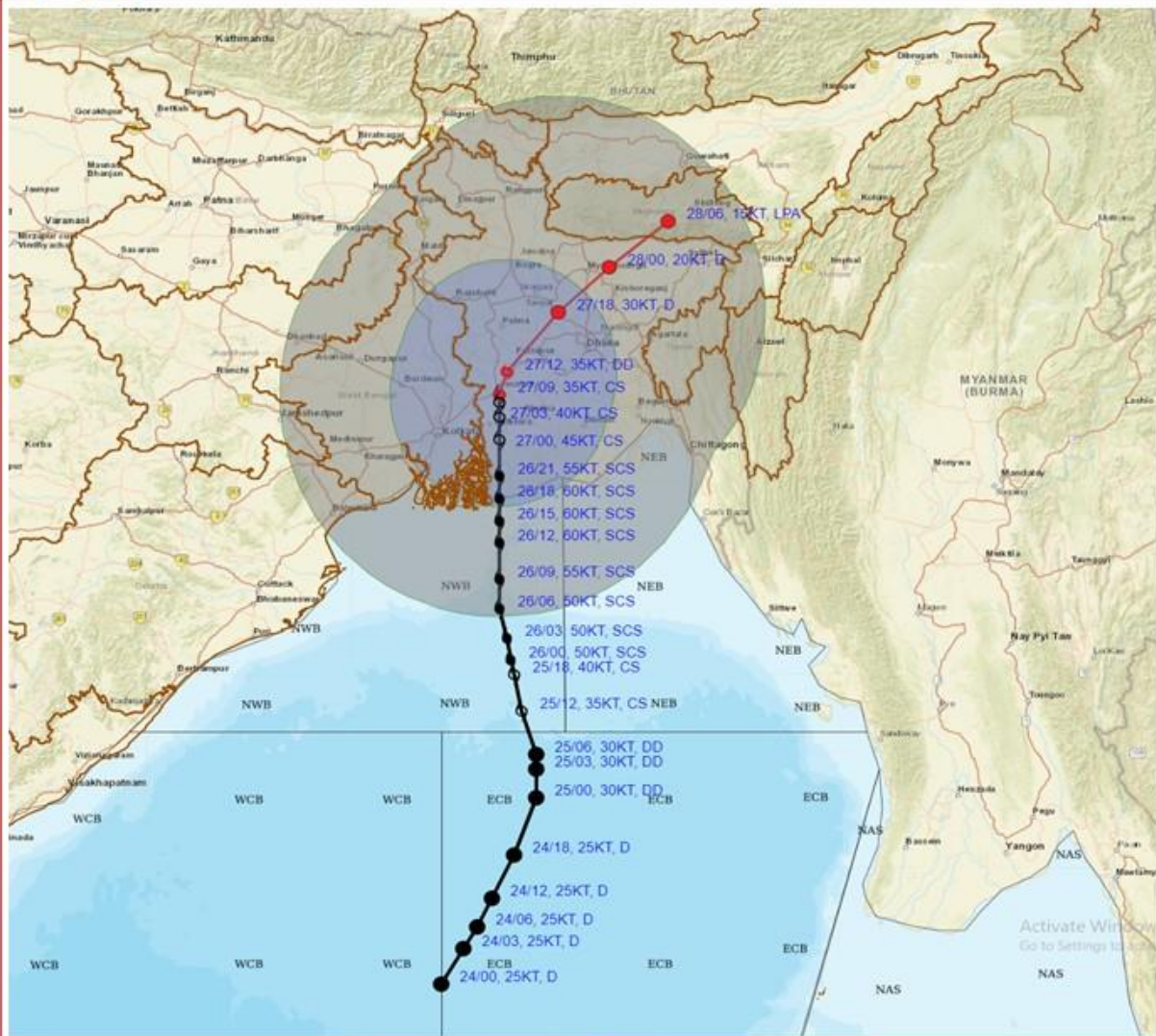
- LESS THAN 34 KT
- 34.47 KT
- ≥ 48 KT
- OBSERVED TRACK
- FORECAST TRACK
- ▲ CONE OF UNCERTAINTY

Forecast	DISTANCE (KM) AND DIRECTION FROM STATIONS			
Date and Time (UTC)	Canning	Khepupara	DHAKA	Mongla
27.05.24/0900	110, NNE	170, NW	140, WSW	70, NNW
27.05.24/1200	150, NNE	190, NNW	110, WSW	100, NNW
27.05.24/1800	260, NNE	250, N	70, NW	190, NNE
28.05.24/0000	360, NE	320, N	120, NNE	280, NNE
28.05.24/0600	460, NE	410, NNE	220, NNE	380, NNE





**FORECAST TRACK ALONGWITH QUADRANT WIND DISTRIBUTION IN ASSOCIATION WITH CYCLONIC STORM 'REMAL' OVER BANGLADESH AND ADJOINING WEST BENGAL BASED ON 0900 UTC (1430 IST) OF 27TH MAY 2024.**



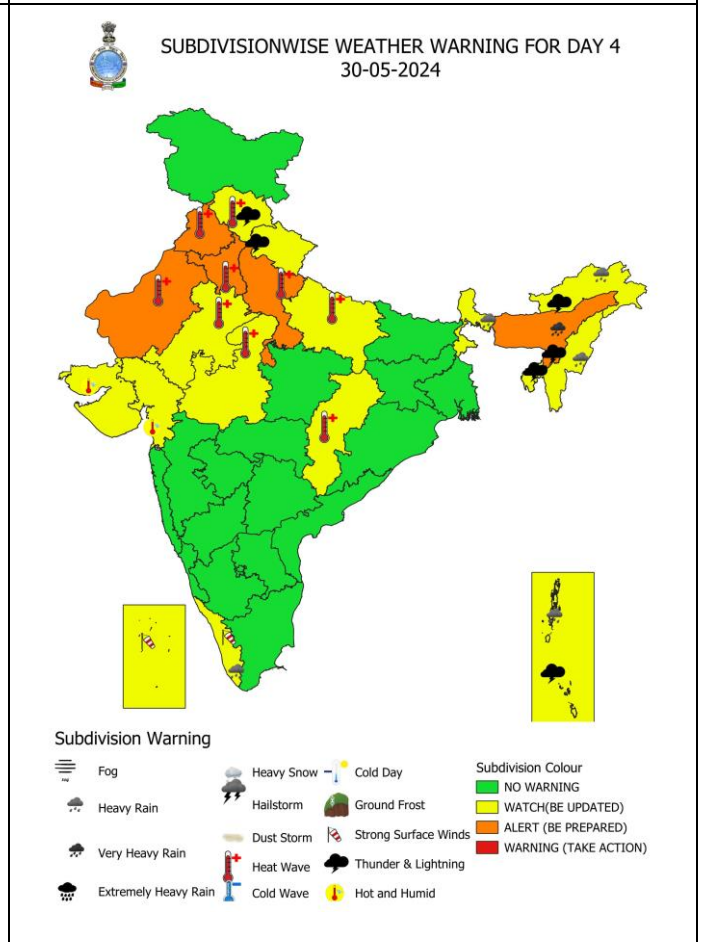
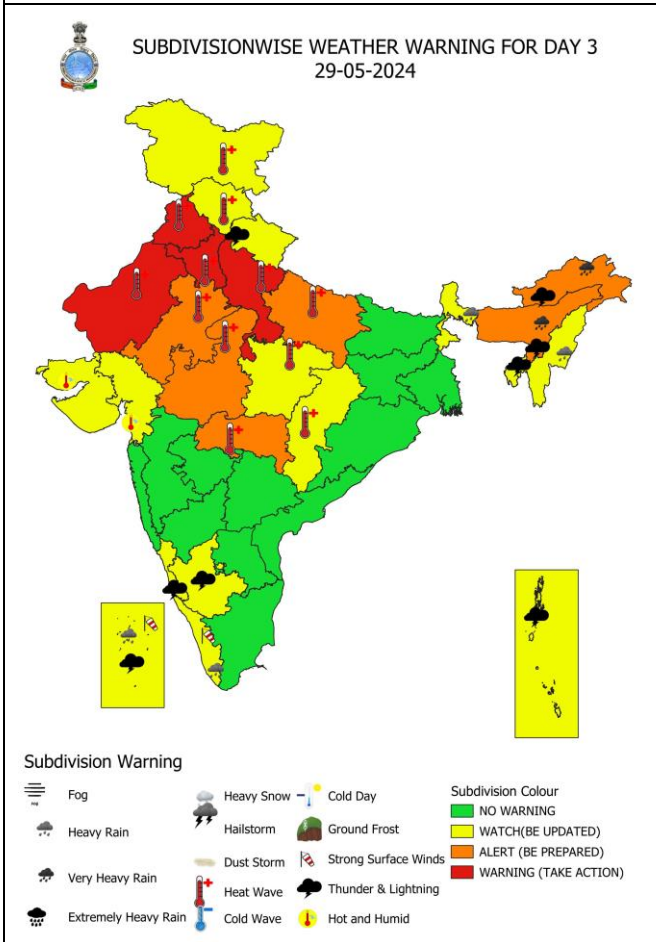
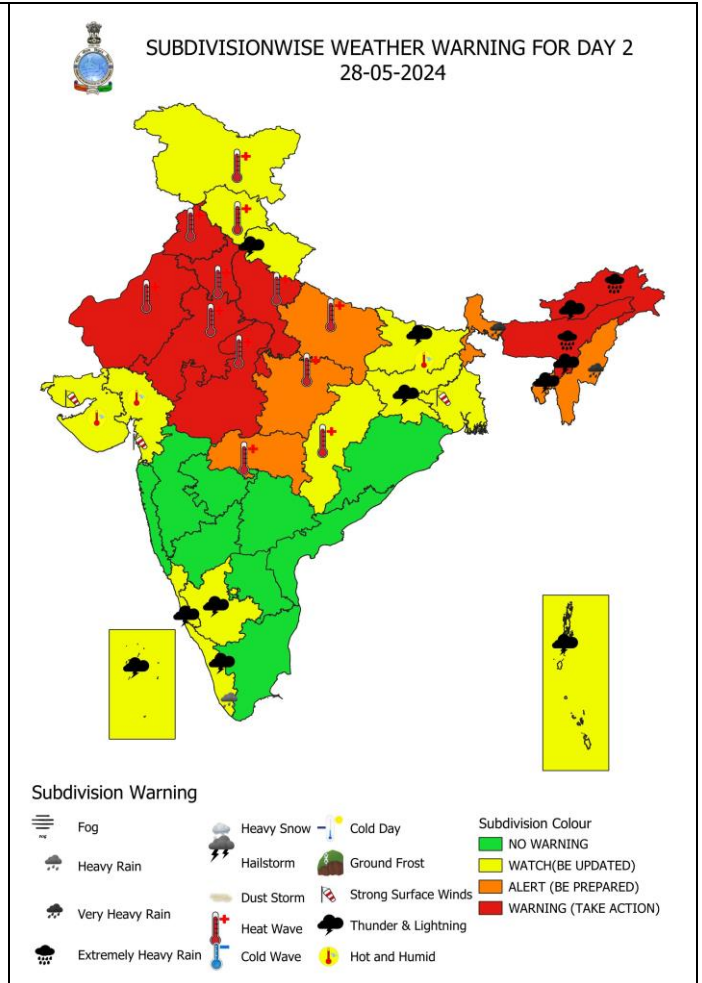
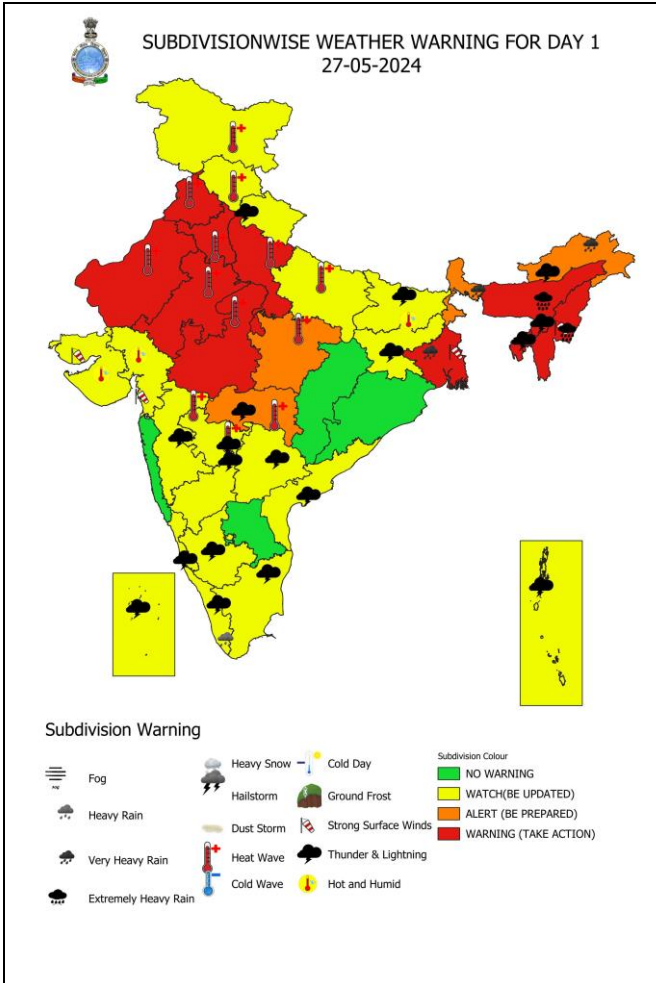
DATE/TIME IN UTC  
 IST=UTC + 0530  
 L: LOW PRESSURE AREA  
 WML: WELL MARKED LOW PRESSURE AREA  
 D: DEPRESSION (17-27 KT)  
 DD: DEEP DEPRESSION (28-33 KT)  
 CS: CYCLONIC STORM (34-47 KT)  
 SCS: SEVERE CYCLONIC STORM (48-63KT)  
 VSCS: VERY SEVERE CYCLONIC STORM (64-89 KT)  
 ESCS: EXTREMELY SEVERE CYCLONIC STORM (90-119 KT)  
 SuCS: SUPER CYCLONIC STORM (≥ 120 KT)

● LESS THAN 34 KT  
 ○ 34-47 KT  
 ● ≥ 48 KT  
 — OBSERVED TRACK  
 — FORECAST TRACK  
 — CONE OF UNCERTAINTY  
 AREA OF MAXIMUM SUSTAINED WIND SPEED:  
 ■ 28-33 KT (52-61 KMPH)  
 ■ 34-49 KT (62-91 KMPH)  
 ■ 50-63 KT (92-117 KMPH)  
 ■ ≥ 64 KT (≥118 KMPH)

**IMPACT OVER THE SEA**

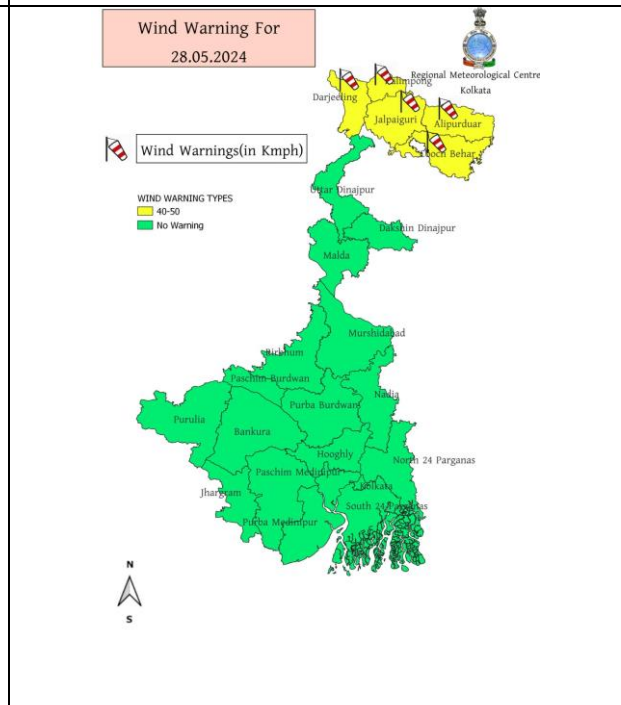
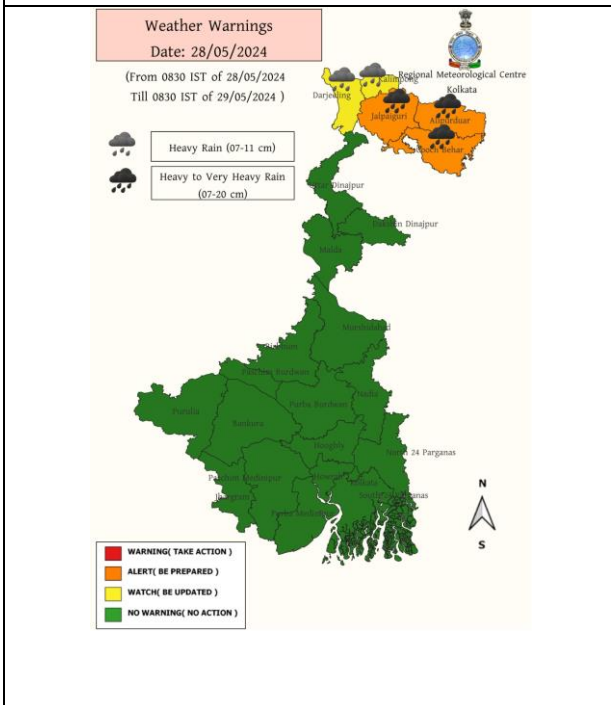
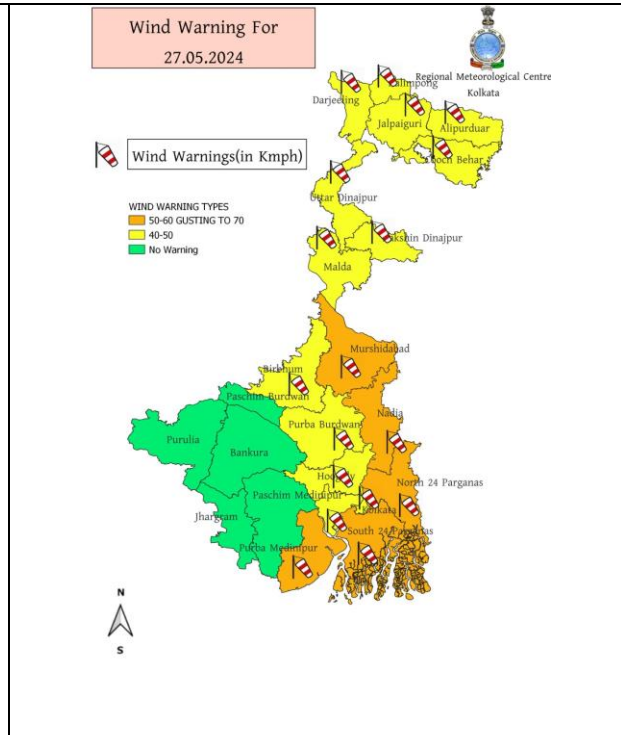
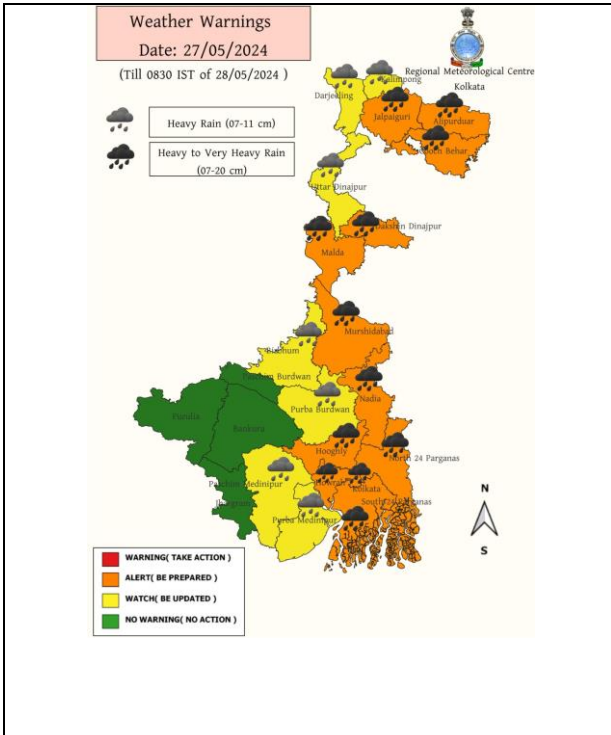
MSW (knot/kmph)	Impact	Action
28-33 (52-61)	Very rough seas	Total suspension of fishing operations
34-49 (62-91)	High to very high seas	Total suspension of fishing operations
50-63 (92-117)	Very high seas	Total suspension of fishing operations
≥ 64 (≥118)	Phenomenal	Total suspension of fishing operations

# All India Warning Graphics





# Warning Graphics of West Bengal



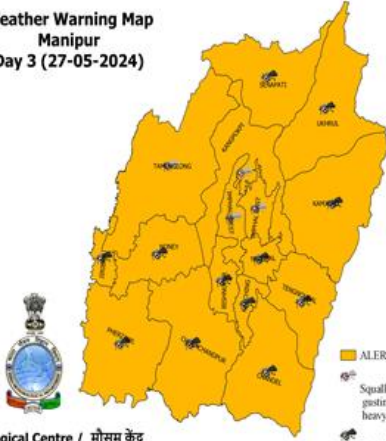


# Warning Graphics of North-eastern States of India

## MANIPUR

**Weather Warning Map  
Manipur  
Day 3 (27-05-2024)**

Issue Date:  
25-05-2024



**Warning**

ALERT (BE PREPARED)

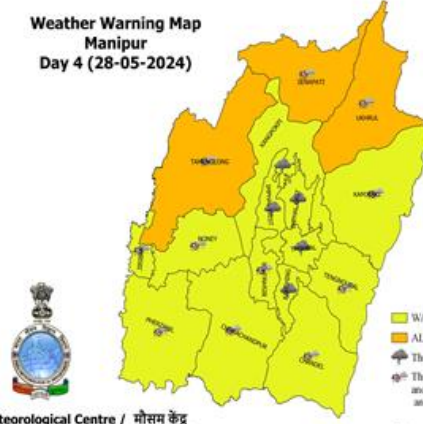
Squally wind with wind speed 40 to 50 kmph gusting to 60 kmph and heavy rain is very likely at isolated places

Squally wind with wind speed 40 to 50 kmph gusting to 60 kmph and very heavy rain is very likely at isolated places

Meteorological Centre / मौसम केंद्र  
Imphal - 795140 / इम्फाल- 795140

**Weather Warning Map  
Manipur  
Day 4 (28-05-2024)**

Issue Date:  
25-05-2024



**Warning**

WATCH (BE UPDATED)

ALERT (BE PREPARED)

Thunder

Thunderstorm with lightning and gusty with wind speed 50 to 60 kmph and heavy rain very likely at isolated places.

Squally wind with wind speed 40 to 50 kmph gusting to 60 kmph and heavy rain is very likely at isolated places

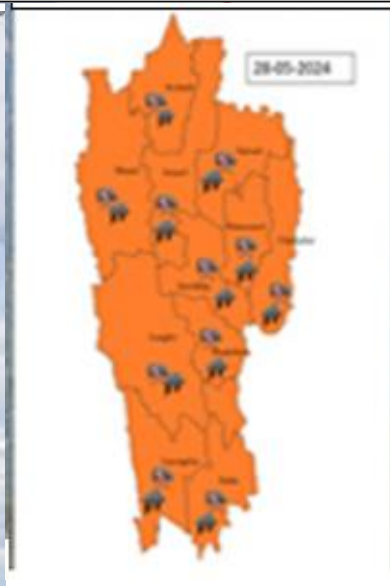
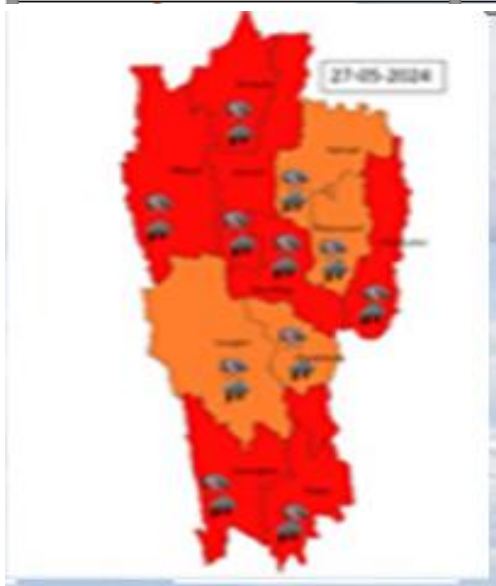
Meteorological Centre / मौसम केंद्र  
Imphal - 795140 / इम्फाल- 795140

Issue Date:

## MIZORAM

Day 1

Day 2



**N**

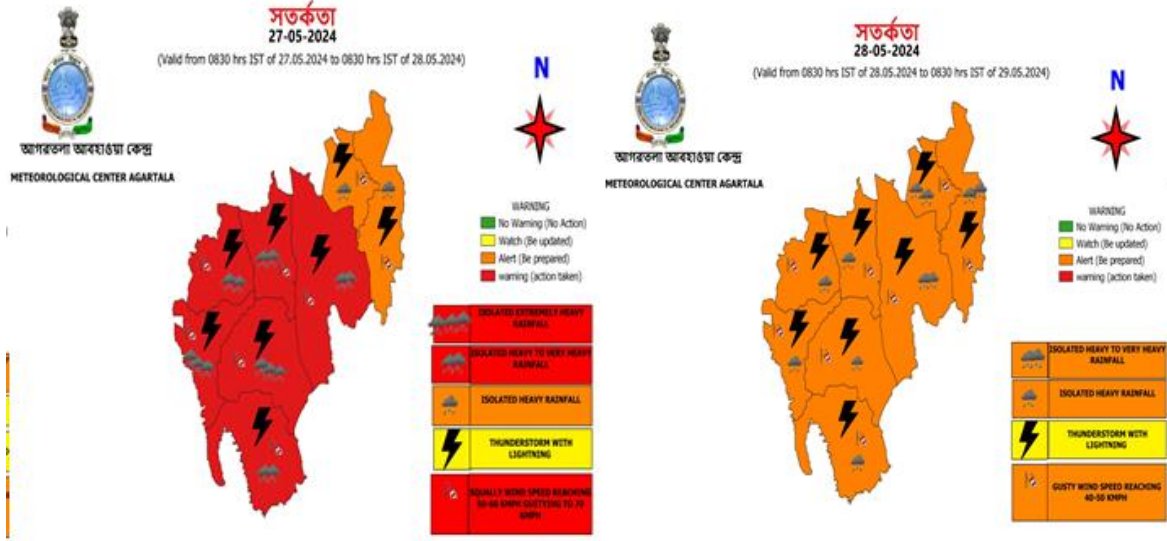
N

**WARNING**

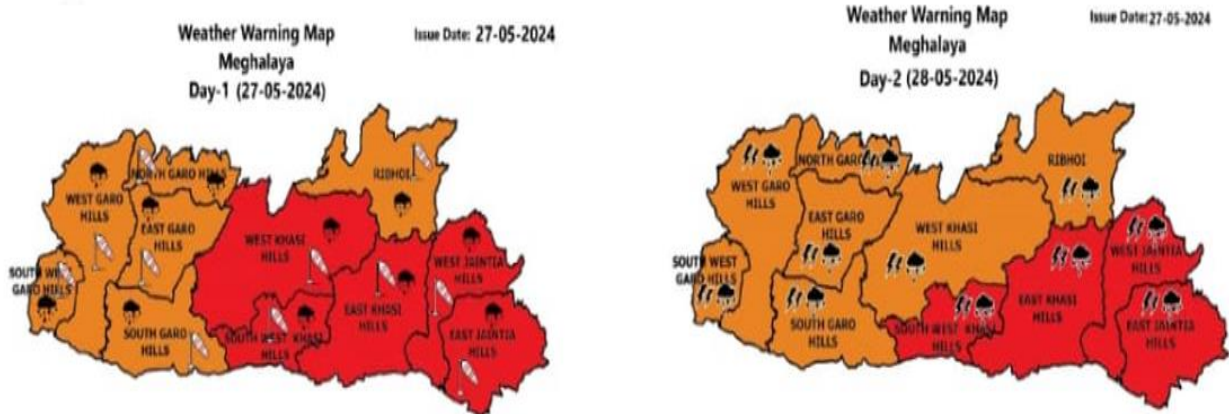
- No Warning (No Action)
- Watch (Be updated)
- Alert (Be prepared)
- Warning (Action taken)

	ISOLATED HEAVY TO VERY HEAVY RAINFALL
	ISOLATED HEAVY RAINFALL
	THUNDERSTORM WITH LIGHTNING
	GUSTY WIND SPEED REACHING 50 KM PH

# TRIPURA

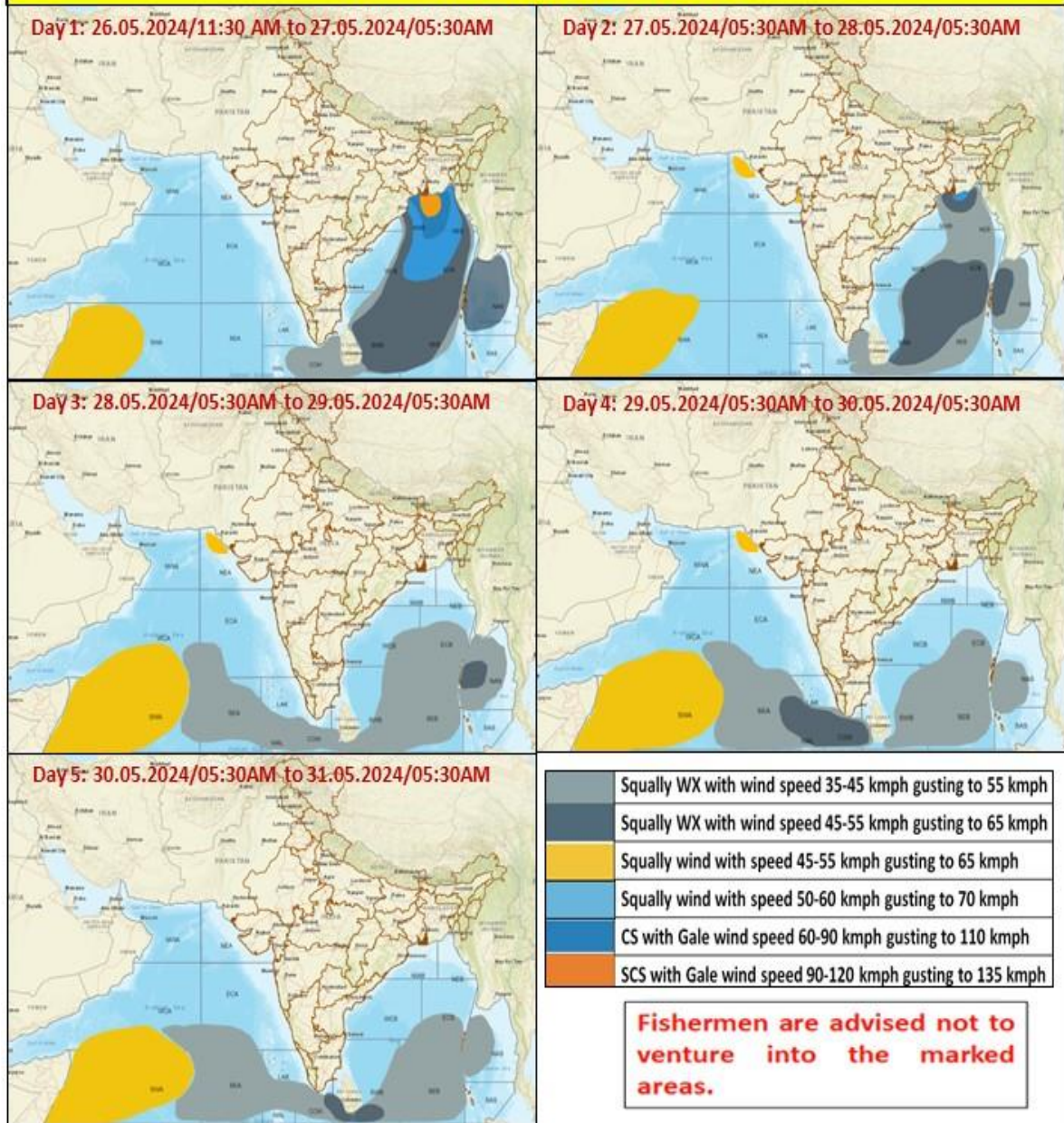


# MEGHALAYA





### Fishermen Warning Graphics

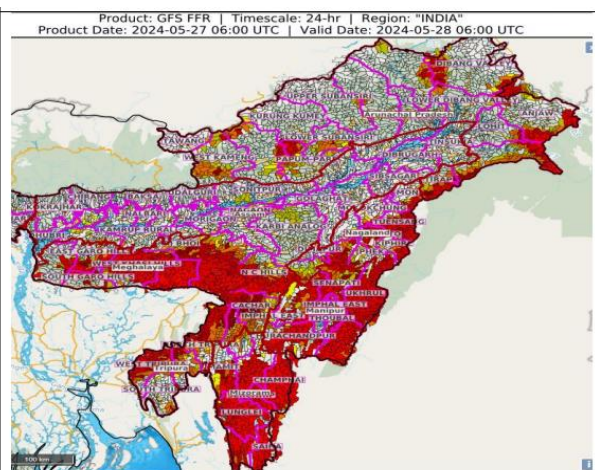








## **Flash Flood Guidance for Northeastern States**

### **24 hours Outlook for the Flash Flood Risk (FFR) till 1130 IST of 28-05-2024 :**

**Moderate flash flood risk** likely over few watersheds & neighbourhoods of **Arunachal Pradesh, Assam & Meghalaya** and NMMT Met Sub-divisions during next 24 hours.

Surface runoff/ Inundation may occur on low lying areas due to persistent rainfall under the influence of impending Cyclonic Storm "Remal" in next 24 hours.



<b>Flash Flood Threat</b>	<b>Flash Flood Risk</b>
 <b>High Threat (Take Action)</b>	 <b>High Risk (Take Action)</b>
 <b>Moderate threat (Be Prepared)</b>	 <b>Moderate Risk (Be Prepared)</b>
 <b>Low Threat (Be Updated)</b>	 <b>Low Risk (Be Updated)</b>